

Day at the Lake

ROCKY GAP STATE PARK



HIKING TRAILS + BOAT RENTALS

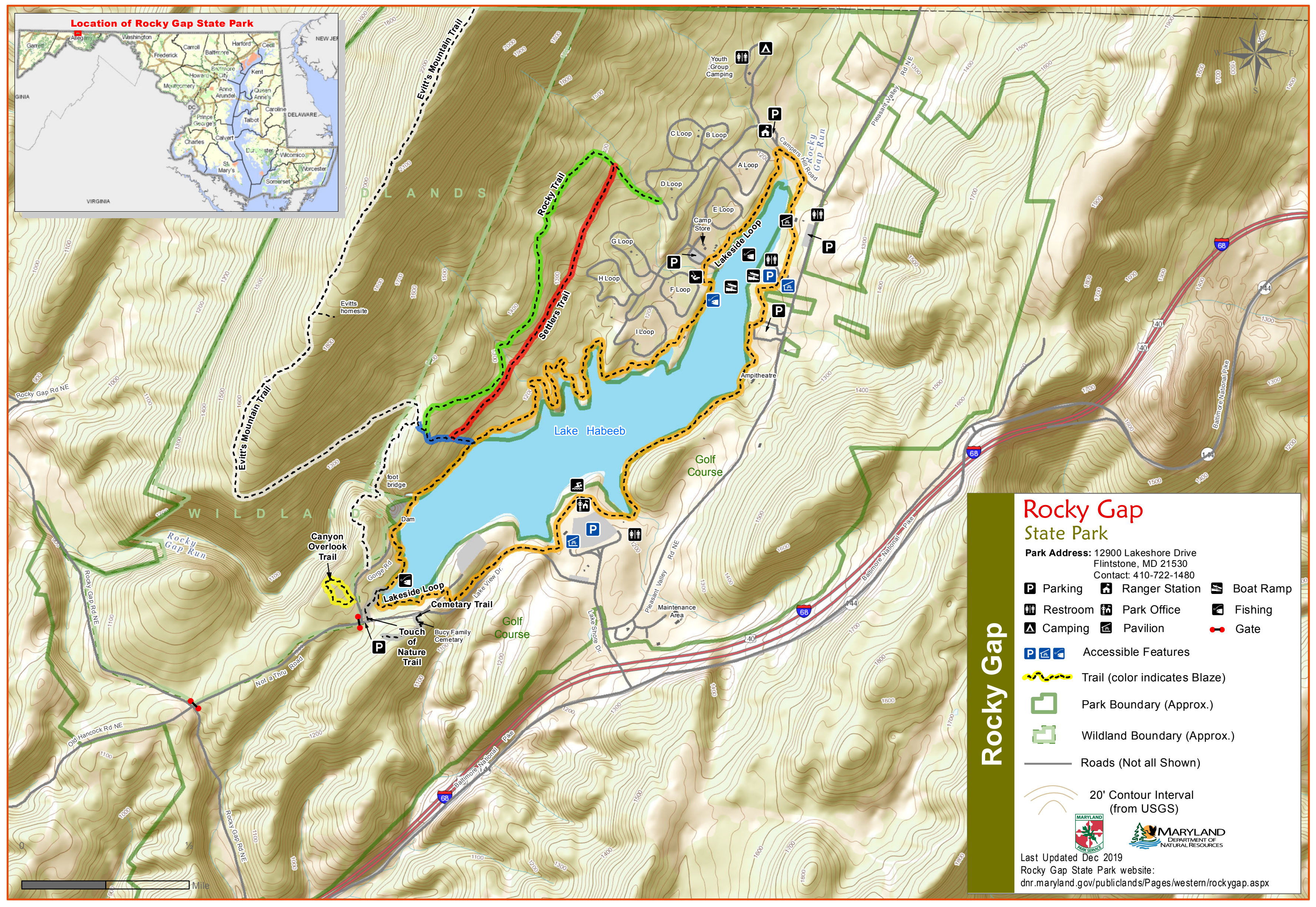
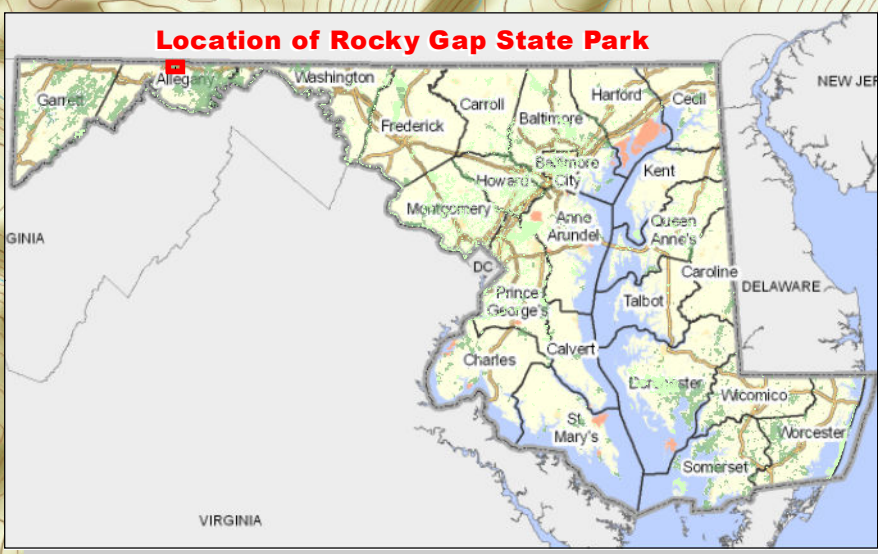
Rocky Gap State Park is located in Western Maryland's Allegany County. The park encompasses over 3,000 acres of public land for visitors to enjoy. Rugged mountains surround the park. The 243-acre Lake Habeeb is known for having the "bluest water in the state." The lake is fed by Rocky Gap Run, which winds its way through an impressive mile-long gorge, displaying sheer cliffs, overlooks and a hemlock forest dense with rhododendron and mountain laurel. Overlooking the lake is Evitts Mountain, named for one of the first European settlers in Allegany County.

Canoe and kayak rentals are available. Please call the park ranger to check weather and availability of rentals for your day. (240) 357-4404

Share your adventures with us! Tag us on insta @RiverMountain

**River
Mountain**

Location of Rocky Gap State Park



Rocky Gap State Park

Park Address: 12900 Lakeshore Drive
Flintstone, MD 21530
Contact: 410-722-1480

- Parking
- Ranger Station
- Boat Ramp
- Restroom
- Park Office
- Fishing
- Camping
- Pavilion
- Gate

Accessible Features

Trail (color indicates Blaze)

Park Boundary (Approx.)

Wildland Boundary (Approx.)

Roads (Not all Shown)

20' Contour Interval (from USGS)

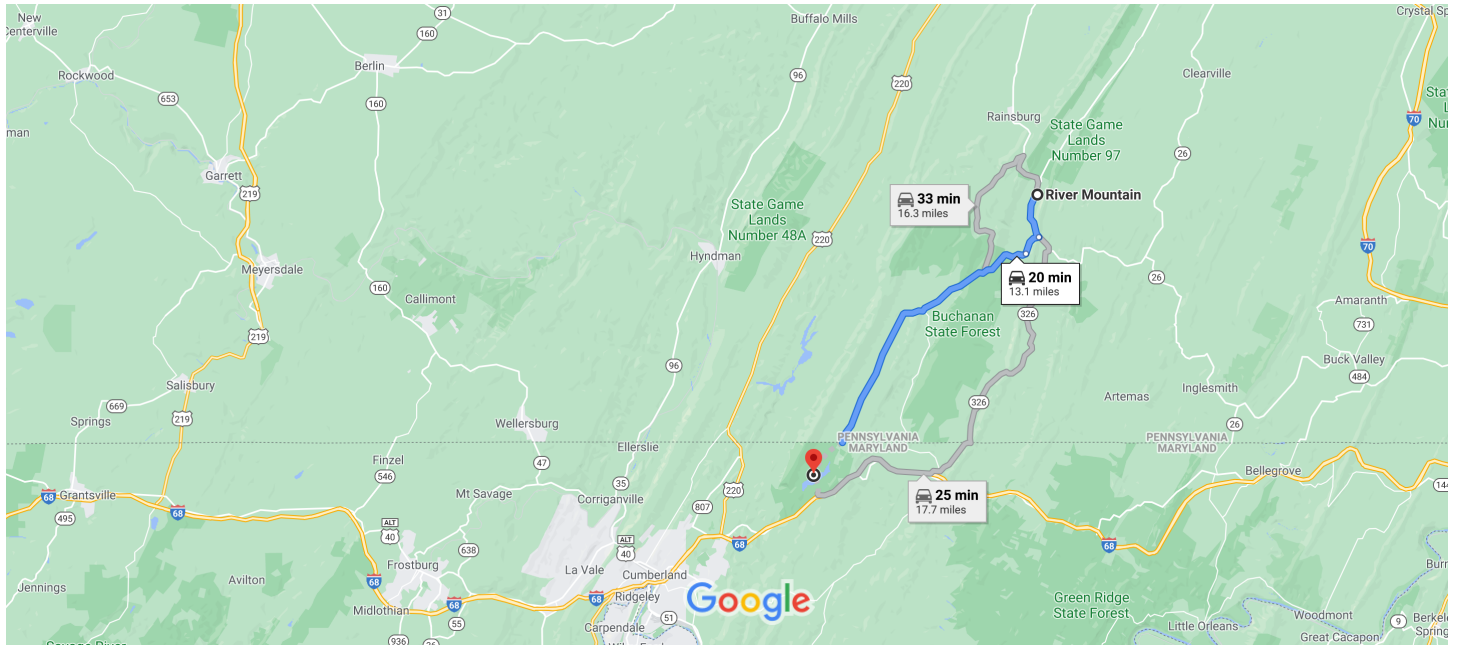


Last Updated Dec 2019
Rocky Gap State Park website:
dnr.maryland.gov/publiclands/Pages/western/rockygap.aspx



River Mountain to Rocky Gap State Park

Drive 13.1 miles, 20 min



Map data ©2020 Google 2 mi

River Mountain

3600 Black Valley Rd, Everett, PA 15537

- ↑ 1. Head south on PA-326 S
1.7 mi
- ➔ 2. Turn right onto Black Valley Rd
0.9 mi
- ➔ 3. Turn right onto Beans Cove Rd/Park View Rd
 - [Continue to follow Beans Cove Rd](#)
 - [Entering Maryland](#)
 10.6 mi

Rocky Gap State Park

12900 Lake Shore Dr, Flintstone, MD 21530

These directions are for planning purposes only. You may find that construction projects, traffic, weather, or other events may cause conditions to differ from the map results, and you should plan your route accordingly. You must obey all signs or notices regarding your route.